



GIT2 Polyclonal Antibody

Catalog No	YP-Ab-03902
Isotype	IgG
Reactivity	Human;Mouse;Rat
Applications	WB;IHC;IF;ELISA
Gene Name	GIT2
Protein Name	ARF GTPase-activating protein GIT2
Immunogen	The antiserum was produced against synthesized peptide derived from human GIT2. AA range:361-410
Specificity	GIT2 Polyclonal Antibody detects endogenous levels of GIT2 protein.
Formulation	Liquid in PBS containing 50% glycerol, 0.5% BSA and 0.02% sodium azide.
Source	Polyclonal, Rabbit,IgG
Purification	The antibody was affinity-purified from rabbit antiserum by affinity-chromatography using epitope-specific immunogen.
Dilution	WB: 1/500 - 1/2000. ELISA: 1/10000.. IF 1:50-200
Concentration	1 mg/ml
Purity	≥90%
Storage Stability	-20°C/1 year
Synonyms	GIT2; KIAA0148; ARF GTPase-activating protein GIT2; ARF GAP GIT2; Cool-interacting tyrosine-phosphorylated protein 2; CAT-2; CAT2; G protein-coupled receptor kinase-interactor 2; GRK-interacting protein 2
Observed Band	84kD
Cell Pathway	nucleoplasm,focal adhesion,
Tissue Specificity	B-cell,Bone marrow,Cerebellum,Dermoid cancer,Epithelium,Skin,T-cell,
Function	alternative products:Additional isoforms seem to exist,function:GTPase-activating protein for the ADP ribosylation factor family.,similarity:Contains 1 Arf-GAP domain.,similarity:Contains 3 ANK repeats.,subunit:Interacts with TGFB111 (By similarity). Interacts with G protein-coupled receptor kinases. Associates with paxillin. Also interacts with PIX exchange factors.,
Background	This gene encodes a member of the GIT protein family, which interact with G protein-coupled receptor kinases and possess ADP-ribosylation factor (ARF) GTPase-activating protein (GAP) activity. GIT proteins traffic between cytoplasmic complexes, focal adhesions, and the cell periphery, and interact with Pak interacting exchange factor beta (PIX) to form large oligomeric complexes that transiently recruit other proteins. GIT proteins regulate cytoskeletal dynamics and participate in receptor internalization and membrane trafficking. This gene has



been shown to repress lamellipodial extension and focal adhesion turnover, and is thought to regulate cell motility. This gene undergoes extensive alternative splicing to generate multiple isoforms, but the full-length nature of some of these variants has not been determined. The various isoforms have functional differences, with respect to ARF GAP activity and to G

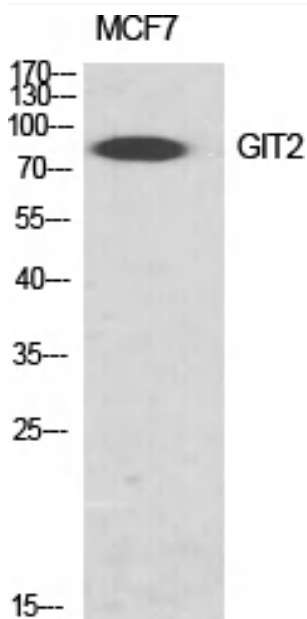
matters needing attention

Avoid repeated freezing and thawing!

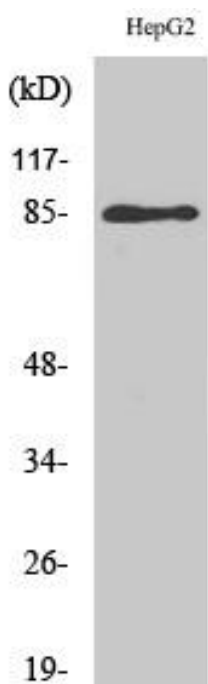
Usage suggestions

This product can be used in immunological reaction related experiments. For more information, please consult technical personnel.

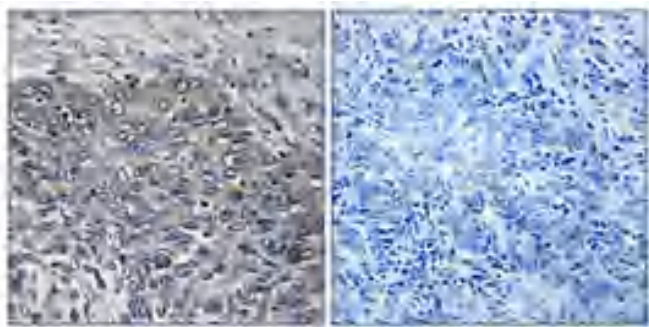
Products Images



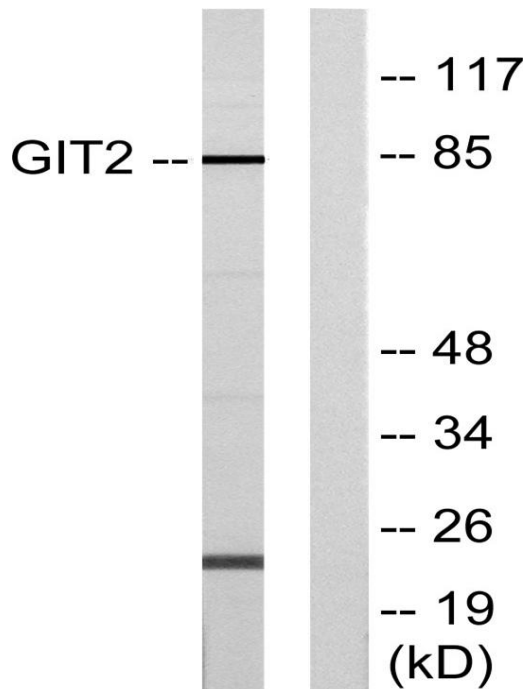
Western Blot analysis of various cells using GIT2 Polyclonal Antibody diluted at 1:1000 cells nucleus extracted by Minute TM Cytoplasmic and Nuclear Fractionation kit (SC-003, Inventbiotech, MN, USA).



Western Blot analysis of HepG2 cells using GIT2 Polyclonal Antibody diluted at 1:1000 cells nucleus extracted by Minute TM Cytoplasmic and Nuclear Fractionation kit (SC-003, Inventbiotech, MN, USA).



Immunohistochemical analysis of paraffin-embedded Human cervix cancer. Antibody was diluted at 1:100(4° overnight). High-pressure and temperature Tris-EDTA,pH8.0 was used for antigen retrieval. Negative contrl (right) obtained from antibody was pre-absorbed by immunogen peptide.



Western blot analysis of lysates from HepG2 cells, using GIT2 Antibody. The lane on the right is blocked with the synthesized peptide.